

2.89 Acres South of I-10 Industrial Land For Sale



West Donlon St./ E of South Lovekin Blvd. ► Blythe, CA

FEATURES:

- Easy access to Interstate 10
- Main off-ramp to downtown Blythe off Interstate 10 exit
- New Hotel & Restaurants in area
- Owner Financing Available
- Asking Price: \$250,000 (\$2.00/SF)



Site Plan on Reverse

Vicinity Map

141968
revised-09/05/17sv

For further information, please contact:

Paula Turner

DRE License # 00702492

Susan Harvey

DRE License # 00957590

Or Visit us at our Website:

www.desertpacificproperties.com • E-mail: admin@dppllc.com



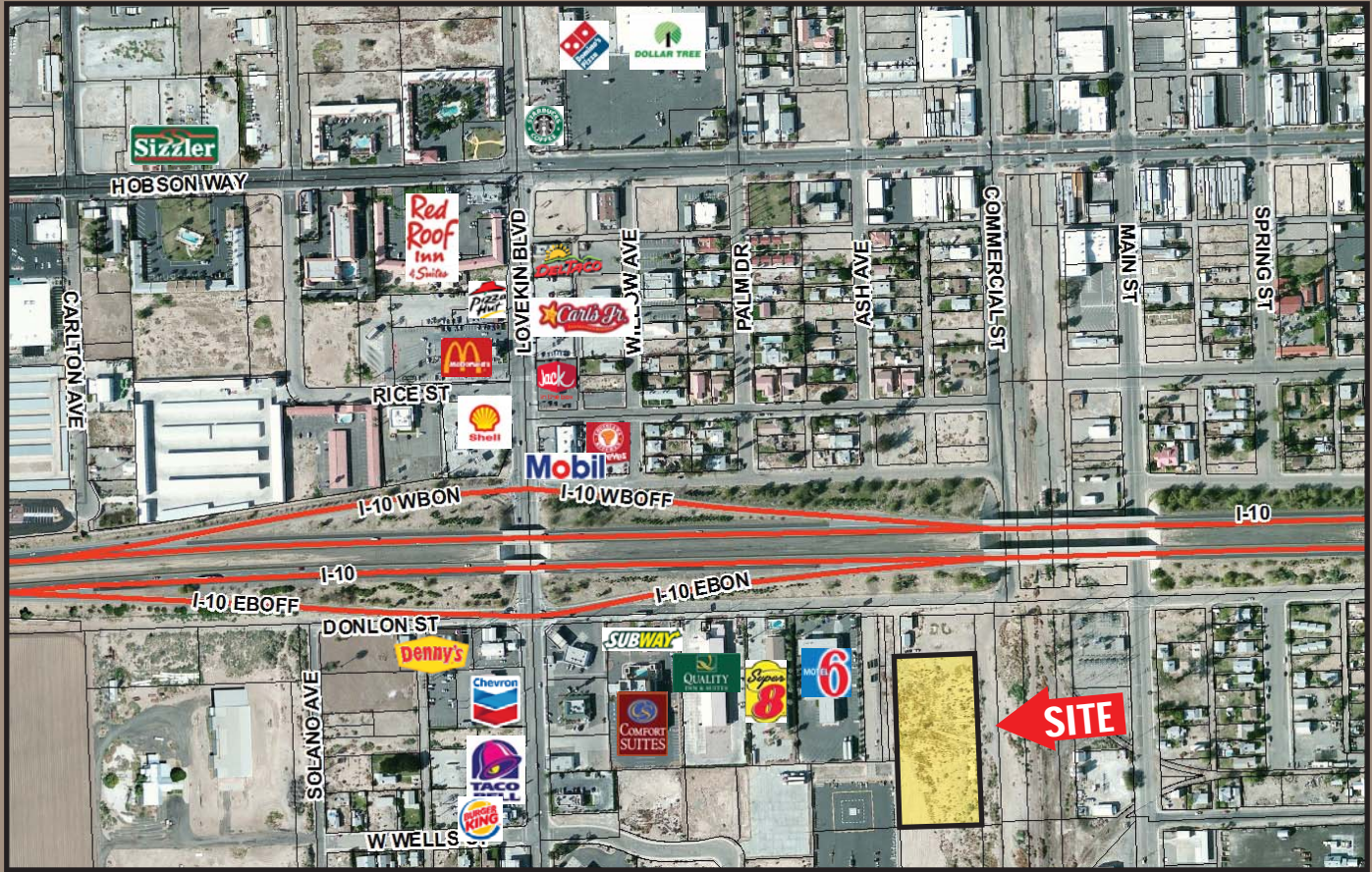
77-933 Las Montanas, Suite 101 • Palm Desert, CA 92211

(760) 360-8200 fax (760) 360-7580

DISCLAIMER: The information above has been obtained from sources believed reliable. While we do not doubt its accuracy, we have not verified it and make no guarantee, warrant or representation about it. It is your responsibility to independently confirm its accuracy and completeness. Any projections, opinions assumptions or estimates used are for example only, and do not represent the current or future performance of the property.

Zoomed In Aerial

(2.89 ac Donlon St.)



Site Amenities

- ◆ **Location:** The property is located just south of West Donlon Street east side of Intake Blvd. in the city of Blythe, CA.
- ◆ **Zoning:** I-G (General Industrial)
- ◆ **General Plan:** I-G (General Industrial)
- ◆ **Utilities:** Electric
- ◆ **Thomas Map:** Page: 5491, Grid: E7
- ◆ **APNs/Parcel Size:** 848-100-008 (2.89 acres)
- ◆ **Directions:** From I-10, take South Lovekin Blvd. exit and make a left (east) turn on Donlon St. Travel past all the hotels/motels property is on your right (south) behind 416 W Donlon St., Blythe.

Parcel Map

Por. SW Sec. 32, T.6S., R.23E.

848-10

